

TUTORIAL FOR META_quant

NOTICE :

version : 1.8

operating system: WINDOWS or ANDROID or IOS ;

configuration minimale needed : minimum 1.5 GHZ processor et 4 GB RAM MEMORY.

configuration required : processor 2.5 to 3.5 GHZ in i5 to i11 or AMD Ryzen, 3, 5 ; 8 to 12 GO RAM MEMORY ; SSD disk will be better.

Platform : no trading platform needed. Only a web browser like google chrome will be enough to start your META_quant.

WEB BROWSER : GOOGLE CHROME, INTERNET EXPLORER, MOZILLA FIREFOX, BRAVE, etc

Extension needed : METAMASK

internet connection : a minimum of 1 to 2 MB per second and a PING of 1 to 200 ms

datafeed: no need to subscribe to any datafeed ! All the data feed are natively integrated into the META_quant, within the API of the main exchanges, and their websocket !

Available exchange: FTX, BINANCE, BITMEX, KRAKEN
exchange in integration : MANGO, BITFINEX, POLONIEX

Available instrument : all the assets of the exchanges mentioned above are available like the main crypto currencies, the main FOREX currencies, the main US stocks, but also the futures on crypto currencies in PERP contract, and all the altcoins!

USAGE :

STARTING :

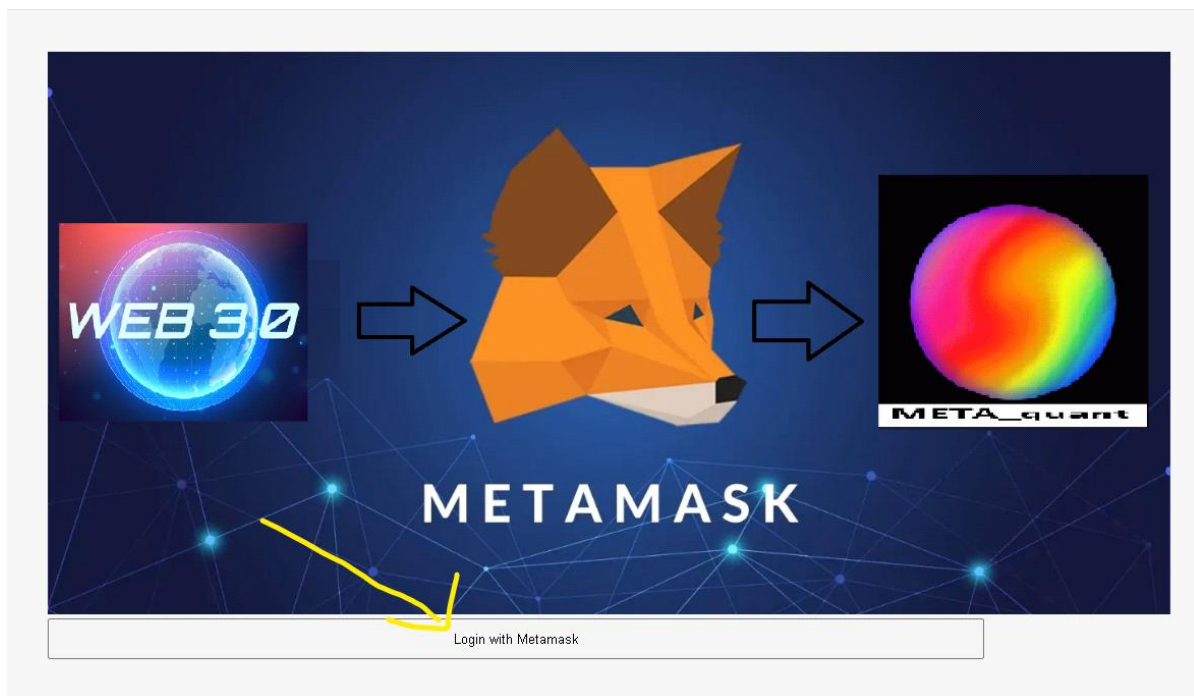
1) To start your META_quant, nothing could be easier! To do this, launch your favorite INTERNET browser, and join the official META_quant website at this address:

<https://metaquantuniverse.com/>

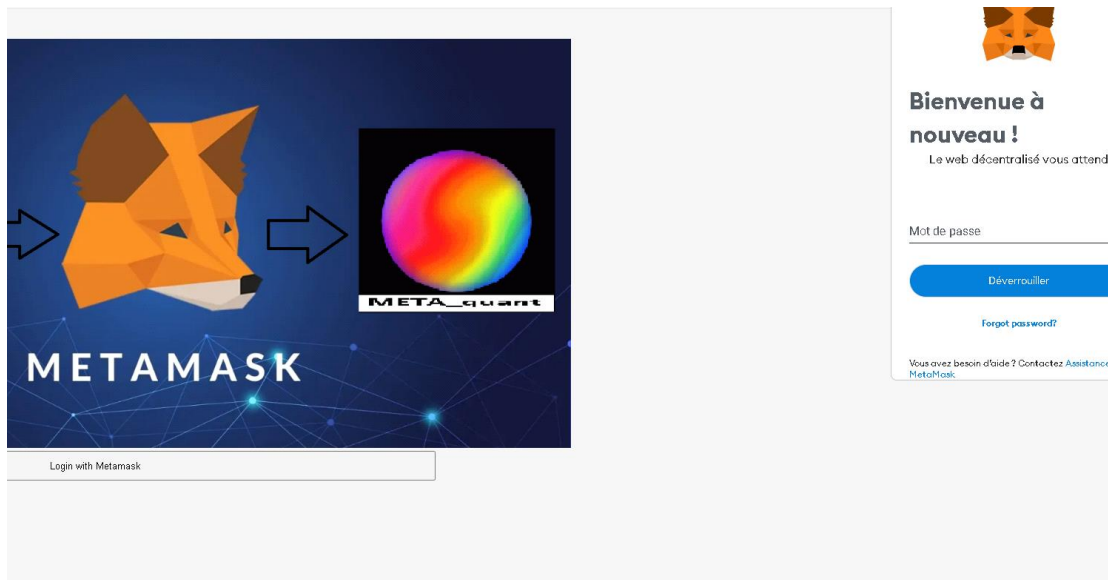
2) You will then arrive on the homepage of the official META_quant website, where you can see the different social network buttons on the top right! Click on the "LOGIN" button!



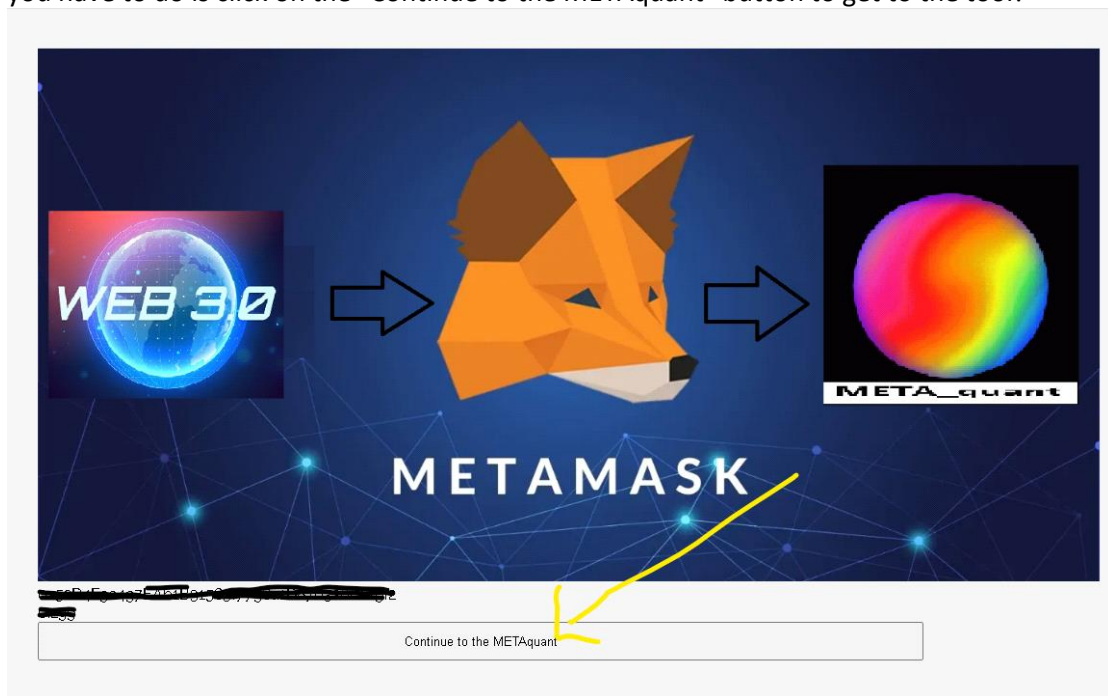
3) After having clicked on the LOGIN button, you will arrive at the META_quant identification page by METAMASK ! (it is necessary that the METAMASK extension is installed beforehand in your WEB browser : here google chrome). Then click on the "LOGIN WITH METAMASK" button



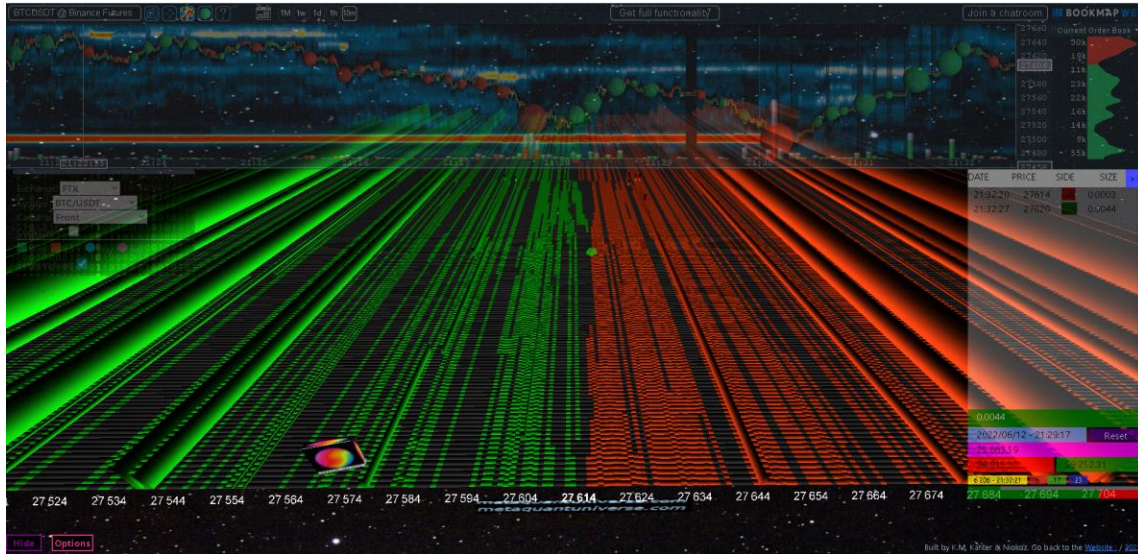
4) Your METAMASK extension will then launch automatically, and you will be prompted to connect to your METAMASK to finalize the connection to your META_quant!



5) You will then see your METAMASK address displayed at the bottom left of the identification page, all you have to do is click on the "Continue to the METAquant" button to get to the tool!



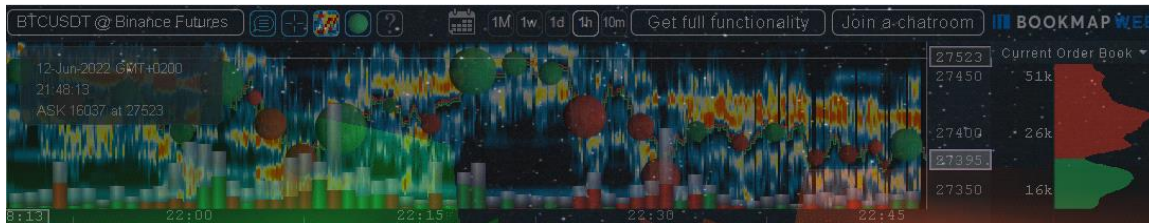
6) The META_quant is launched! And you access to the display of BTCUSDT or ETHUSDT of the exchange binance or FTX by default!



Here we find the default display that we will have at the start of META_quant! From there, the launching of your META_quant tool is completed! You are there!

DESCRIBE :

1) THE BM FRAME :



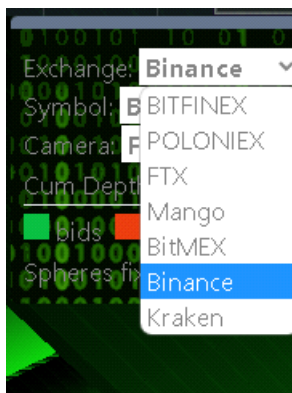
in the upper part you will find the BOOKMAP WEB frame where you can find the price action and the heatmap that goes with it. You can of course change the exchange and the instruments, but this is strictly limited to crypto currencies for the moment.

2) The SETUP MENU :

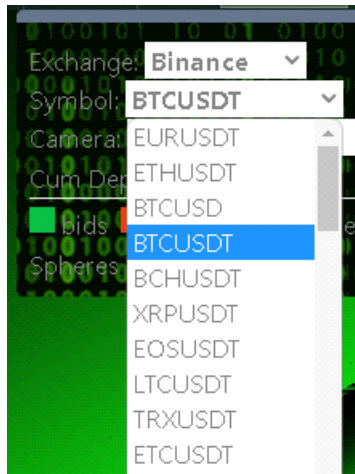


It is a menu that will be transparent, but will light up as soon as the mouse pointer approaches it, so that you can see the boxes and the different menu choices better.

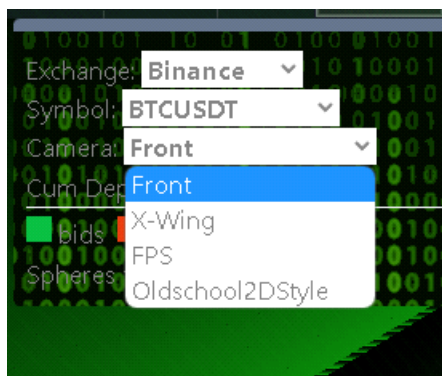
a) In **EXCHANGE**, you will find all the available exchanges like BINANCE, FTX, BITMEX, etc.



b) In **Symbol**, you will find the list of the different instruments that are available through the selected exchange.



c) In **CAMERA**, you will find the different camera modes available such as "FRONT", XWING, FPS, and 2Dolschoolstyle!



d) Just below, there is a box (which is unchecked by default) that will allow you to display a cumulative of the available liquidity of the notebook in order to display the 3D animation of the META_quant in a PEAK&VALLEY form. It is a less precise view, but more homogeneous.

e) Next, we will find the legend for the bids, asks, buys, and sells!

To simplify: the green 3D vertical bars are the BID limit orders of the book; while the red 3D vertical bars are the OFFER limit orders of the book.

As for the TRADES, they are arranged by red and green spheres (sell trades in red, buy trades in green) or blue and purple.

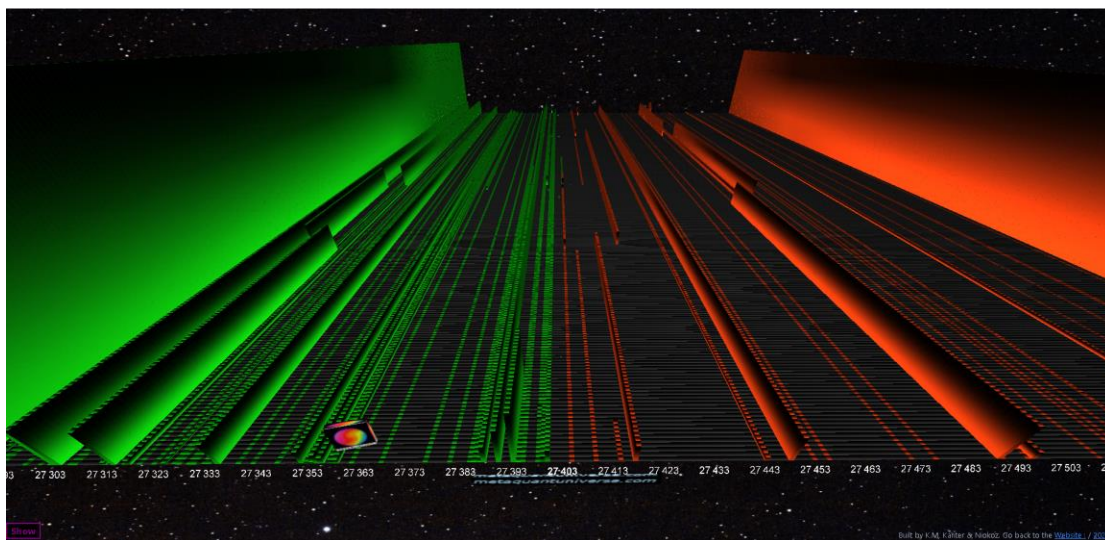
f) Finally, just below, you will find the button "Sphere FIXED" which will allow you to remove the scaling of the size of the 3D spheres; so that each of the spheres have the same size, whatever the volume of the trade! If this box is unchecked, then each sphere size will be adjusted to the trade size ! (sensations

guaranteed)

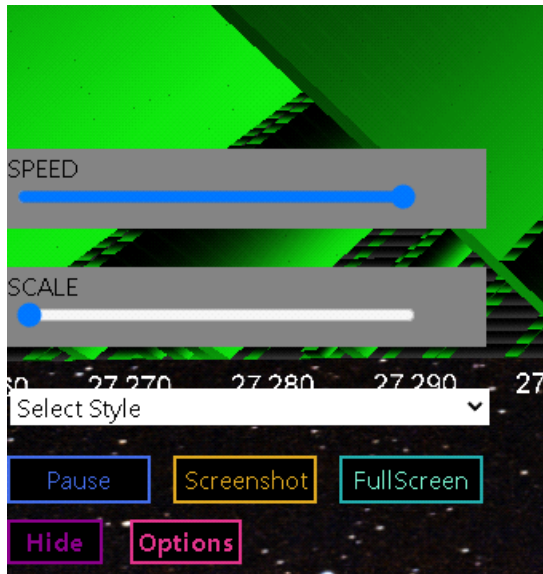
3) the HIDE and OPTIONS BUTTON :



a) with the "HIDE" button, you will be able, with a single click, to hide all the different elements of the META_quant, to display only the 3D animation of the DOM! A purified mode of the tool, which allows to immerse oneself in a more important way; in particular for the use of VR helmet. By pressing the SHOW button again, all the elements will reappear at once!



b) with the "OPTIONS" button, you will be able to display a second setting menu with the following parameters:



---> **SPEED :**

this is a gauge that will allow us to set the refresh rate (and by extension the scrolling speed of the map) of the DOM! in milliseconds! The more the value is on the right of the gauge, the faster it will be (1 milli second); the more the value is on the left of the gauge, the slower it will be (500 milli second).

---> **SCALE:**

this is a second gauge that will allow us to adjust the "scaling" of the vertical bars of the DOM! the more the value of this gauge is to the right, the more the scaling will be important! Conversely, the more the value of this gauge is to the left, the smaller the scaling will be (1/1). The goal here is to better visualize the 3D aspect of the green and red vertical bars of the DOM; while respecting the scaling according to the size of the limit orders.

---> **Select Style :**

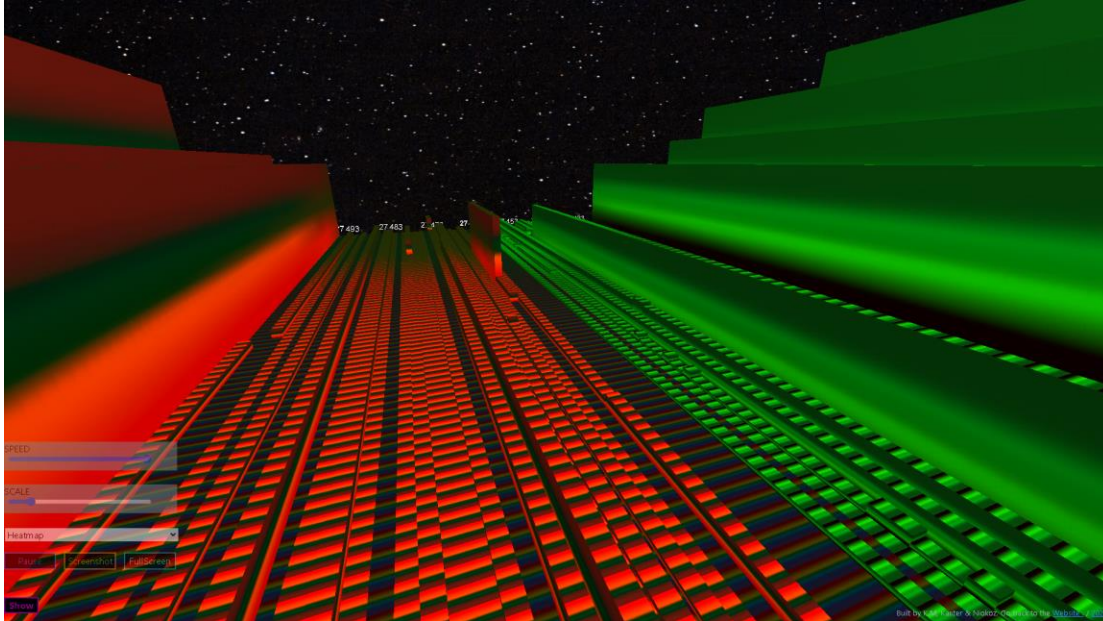


When we click on it, it will unroll a sub-menu that will allow us to select different graphic templates that will be applied to the design of the green and red vertical bars! Change colors, change styles, structures, etc. Everything is possible. 11 different graphic templates are currently available.

---> **Pause :**

When we click on this PAUSE button, the 3D animation will automatically pause, and stop! as if time had stopped! This will allow us to navigate in 3D inside the DOM matrix, and thus to see what happened with more precision, interaction, but also details! In fact, with the mouse wheel, we will be able to zoom and unzoom with the optical zoom of the orbital camera up to x1000; while conserving an optimal graphic quality of 100% of the graphical rendering thanks to the WebGL technology.

Once you have pressed PAUSE, and you want to resume the animation in REAL time, you just have to press the (blue) START BUTTON ! And everything starts again in REAL time.



---> Screenshot :

With the screenshot button, you will be able to take "a picture" of the 3D animation of the META_quant, and that, with only one click! Simply by clicking on "screenshot"! The screenshot will then be taken automatically, and stored automatically in the DOWNLOAD folder of your computer.

---> FullScreen :

The full screen button will allow you to switch the META_quant directly to "full screen" mode, with a single click! The borders of your web browser will no longer be visible! and your META_quant will be displayed as if you were watching a movie in full screen! A press on the ESC button to exit the full screen mode will suffice, or a new click on the "full screen" button will return to normal screen mode.

4) The TAPE (time and sales window) :

DATE	PRICE	SIDE	SIZE	>>
23:20:50	27515	buy	0.1672	
23:21:02	27509	sell	0.01	
23:21:02	27507	sell	0.0016	
23:21:02	27507	sell	0.0551	
23:21:02	27507	sell	0.2126	
23:21:07	27504	sell	0.0033	
23:21:07	27502	sell	0.0009	
23:21:09	27500	sell	0.015	
23:21:09	27499	sell	0.0017	
23:21:09	27498	sell	0.0003	
23:21:10	27494	sell	0.0017	
23:21:10	27494	sell	0.0016	
23:21:10	27493	sell	0.2126	
23:21:11	27493	buy	0.215	
23:21:16	27481	sell	0.0003	
23:21:18	27475	sell	0.015	

0.015

2022/06/12 - 22:37:07 Reset

348 899.22

3 526 154.60 3 177 255.39

4 332 - 23:21:10 13 21 34

a) the different TAPE column :

as in most of the TAPE, we will find here from left to right, a time stamp with the exact time at which the transaction took place (hour, minutes, seconds) in the DATE column.

DATE	PRICE	SIDE	SIZE	>>
23:35:40	27418	sell	0.0017	
23:35:40	27415	sell	0.0017	
23:35:41	27414	buy	0.0001	
23:35:47	27414	buy	0.0001	

In the PRICE column, you will find the price at which the transaction was made.

In the SIDE column, you will find the nature of the trade; either a long trade or a short trade. The sell trades are colored in red. Buying trades are colored in green.

In SIZE, we will find the quantity (the amount) of the trade; that is to say the VOLUME that has been invested with this trade line.

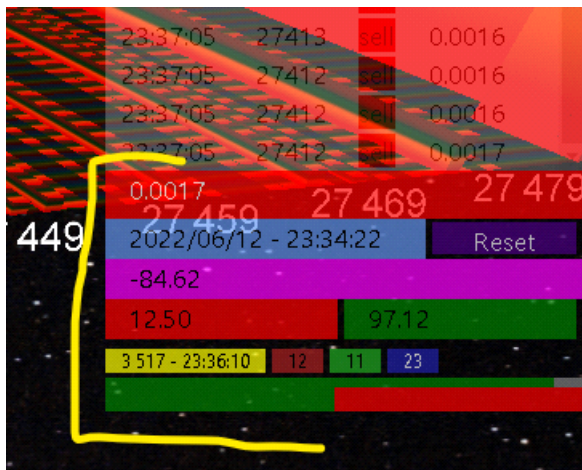
Each line of the tape will represent a trade that has been completed.

b) the different TAPE button :

On the top right of the TAPE, you will find a blue button ">>" which will allow to hide only the table of the tape, and thus to leave more place as for the reading of the 3D animation. It will be enough to press a second time on this same blue button ">>" so that the TAPE reappears in only one click!

We will also find at the bottom right of the TAPE, a purple button "RESET"! By pressing the RESET button, it will re-initialize the data of the PARE, and in particular the data which are calculated just below the PARE!

c) the TAPE data :



- Just below the TRADE listing in the TAPE window, you will find a rectangular GREEN or RED box! This is the "LAST TRADE". This is the last TRADE that was traded on the defined market. It will appear in green when this last trade was a long trade; or in red when this last trade was a short trade.

- Then we will find in light blue the detail of the time stamp with the date and time; displayed just to the left of the RESET button in purple.

- Just underneath, there is a rectangular purple button! This is the famous cumulative delta volume (the set of cumulative delta).

- Again below, you will find in the red box: the TOTAL sell volume, and in the green box just next to it on the right: the total Buy volume! This is the total of all the cumulative buy trades, and all the cumulative sell trades.

- Finally we will find the data related to the QUOTE STUFFING just below in yellow / red / green / blue.

In yellow we will have the number of events in the order book, per minute ! In red we will have all the events in the order book, per offer, and per second! In green we will have all the events in the order book at the BID, and at the second! In blue, we will have all the events in the order book at the BID and at the OFFER, per second.

By events in the order book, I mean everything that concerns the additions and withdrawals of orders that are made in the order book, and this on any of the prices quoted in the book.

d) The POWER METTER of the TAPE :



This is a dynamic gauge that will show us the pressure on the order book in terms of BID and OFFER! The more pressure there is on the BID, the more green the gauge will show! Conversely, the more the pressure will be accentuated at the OFFER, and the more the gauge will show a large red part. The goal here is to see in which direction the quote stuffing is displayed the most.

WEBSITE : <https://metaquantuniverse.com/>
MAIL : support@metaquantuniverse.com
TELEGRAM : <https://t.me/QuantMapChannel>
FACEBOOK : <https://www.facebook.com/profile.php?id=100010372865291>
YOUTUBE : <https://www.youtube.com/channel/UCkwbm2Jw6q1qbb28azfO3hA>
TWITTER : <https://twitter.com/NicooooooFX>

